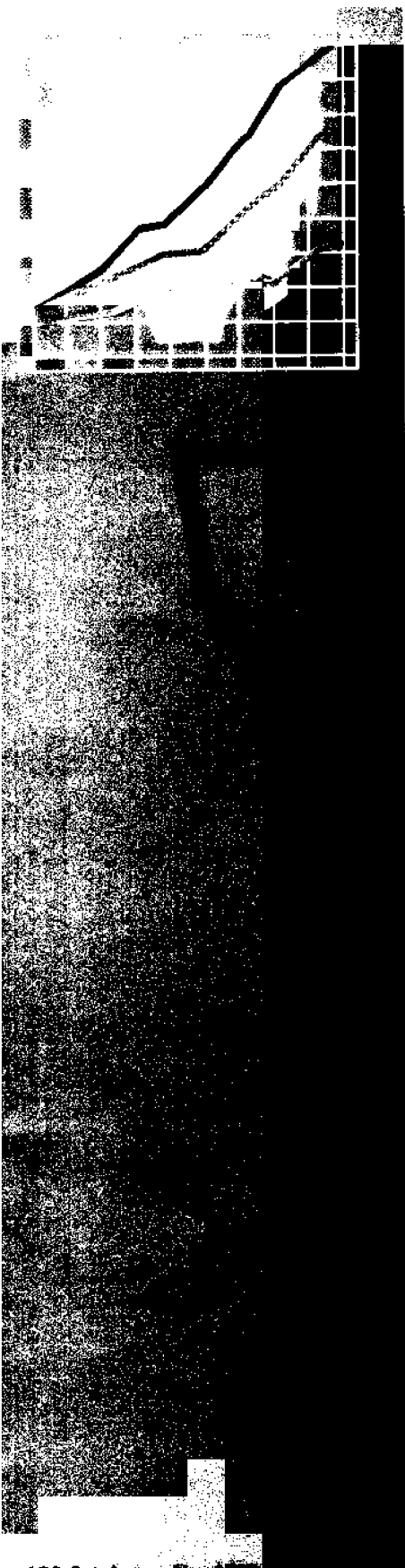


**Australian
Bureau of
Statistics**

TASMANIAN

STATISTICAL INDICATORS

January 1995



T A S M A N I A N

STATISTICAL INDICATORS

January 1995

William P. McReynolds
Deputy Commonwealth Statistician and
Statistician of the State of Tasmania

Australian Bureau of Statistics
Catalogue No 1303.6

CONTENTS

Page

Commentary	i
-----------------------------	---

Table

Population and vital statistics

1 Population	1
2 Births, deaths and marriages registered	1

Employment and unemployment

3 Labour force status — seasonally adjusted and trend series	2
4 Labour force status by region and Tasmania, males	3
5 Labour force status by region and Tasmania, females	4
6 Labour force status by region and Tasmania, persons	5
7 Teenage labour market	6
8 Employed persons by occupation	7
9 Employed wage and salary earners, sector and industry	8
10 Average hours worked	9
11 Job vacancies	9
12 Industrial disputes	9

Wages and prices

13 Average weekly earnings of employees	10
14 Award rates of pay indexes	10
15 Summary of annual movements in wages and prices	11
16 Consumer price index: house price index numbers	11
17 Consumer price index	12
18 Price index of materials used in building other than house building	13, 14

Production

19 Miscellaneous indicators of production (production of selected commodities)	15
20 Livestock slaughtering, numbers	16
21 Livestock slaughtering—seasonally adjusted and trend series	16
22 Meat production, Tasmania	17
23 Principal mineral concentrates produced	17
24 Sawmills and plywood mills: logs delivered and timber produced	18
25 Chipping and grinding of wood	18
26 Logs delivered for milling or chipping	18

Building

27 Building approvals	19
28 Dwelling commencements	19

Finance

29 Banking statistics	20
30 Private new capital expenditure by type of asset	20

Tourism

31 Passenger arrivals and departures	21
32 Passenger arrivals by air and sea into Tasmania	21
33 Accommodation statistics	22

Transport and trade

34 Registrations of new motor vehicles	23
35 Turnover of retail establishments at current prices	23

Major Statistical Indicators

36 Australian and State figures	24
---	----

ENQUIRIES

For further information, contact the Information Officer on (002) 20 5800 or write to the Deputy Commonwealth Statistician, GPO Box 66A, Hobart, 7001 (1st floor, 175 Collins Street, Hobart).

Publications issued by the Tasmanian Office during December 1994

<i>Catalogue number</i>	<i>Publication</i>	<i>Date of release</i>
8635.6	Tourist Accommodation, Tasmania, September 1994	20/12/94
8731.6	Building Approvals, Tasmania, October 1994	12/12/94
8741.6	Dwelling Unit Commencements, Tasmania, September 1994	7/12/94
9303.6	Motor Vehicle Registrations, Tasmania, October 1994	6/12/94
1303.6	Statistical Indicators, Tasmania, December 1994	8/12/94

Symbols and other usages

The following standard symbols are used in publications of the Tasmanian Office of the Bureau:

ASIC	Australian Standard Industrial Classification
M	males
F	females
P	persons
n.a.	not available
n.e.c.	not elsewhere classified
n.e.i.	not elsewhere included
n.p.	not available for separate publication, but included in totals where applicable
n.y.a.	not yet available
p	preliminary — figure or series subject to revision
r	figure or series revised since previous issue
s	subject to sampling variability too high for most practical purposes
..	not applicable
—	nil or rounded to zero
—	break in continuity of series (where a line is drawn between two consecutive figures in the same column, or alongside two or more figures in consecutive columns)
(M)	Municipality
(C)	City

Where figures have been rounded, discrepancies may occur between sums of the component items and totals.

Values are shown in Australian currency.

Commentary

Definitions

Trend series estimates are used to "smooth" data to enable longer term trends to become more noticeable. They are the preferred series to use when making a comparison over time, eg. 12 months.

Original series estimates (or unadjusted estimates) are the survey data as collected, generalised to the relevant population. These estimates have not been seasonally adjusted or trend adjusted ("smoothed").

Employment

States' trend series comparisons —

The Australian and State *trend series* comparisons, shown on page 24, indicate that there was an increase of 0.8 per cent in Tasmania's employment over the year to November 1994. The largest percentage increase in employment was in Queensland (5.4 per cent). The next highest increase in employment was in Western Australia (4.0 per cent), followed by NSW (3.3 per cent) and Victoria (2.7 per cent). South Australia had an increase in employment of 2.1 per cent.

Regional Tasmania's original series figures —

In the Hobart and Southern Statistical Division the estimate of *unadjusted* employment increased by 4000 between September 1993 and September 1994 to 98 200. The estimate of employment in the Mersey-Lyell Statistical Division was 43 900 in September 1994, an increase of 1500 on the figure for September 1993. Employment in the Northern Statistical Division decreased by 1500 between September 1993 and September 1994 to 53 800.

(See tables 3–8, pages 2–7.)

Unemployment

Tasmania's trend series figures —

The Tasmanian provisional *trend series* estimate of 24 000 unemployed persons in November 1994 was a decrease of 3400 on the figure for November 1993 of 27 400. The estimate of the unemployment rate of 11.0 per cent in November 1994 was a decrease compared to the estimate of the unemployment rate of 12.5 per cent in November 1993.

(See tables 3–8, pages 2–7.)

The labour force

Tasmania's trend series figures —

In November 1994 there was an *unadjusted* estimate of 366 500 civilian Tasmanians aged 15 or more. There were an estimated 218 300 persons (based on *trend series* estimates) in the labour force. The estimate of the labour force participation rate in November 1994 was 59.6 per cent, compared with the figure of 60.3 per cent in October 1993.

For males, the estimate of the participation rate was 71.4 per cent, compared with 71.5 per cent for November 1993. For females, the estimate of the participation rate was 48.1 per cent (compared with 49.5 per cent in November 1993).

(See table 3, page 2.)

Employed wage and salary earners

In March 1994 there were approximately 142 500 employed wage and salary earners in Tasmania. In March 1992 the figure was 144 700 employed wage and salary earners.

In February 1994 the Tasmanian public sector accounted for 31.7 per cent of all employed wage and salary earners. Overall, the category Community services had the

highest' industry representation — 30.0 per cent — compared with the equivalent figure of 24.3 per cent recorded in February 1992. The next highest industry grouping was Wholesale trade and Retail trade (19.7 per cent, compared with 19.0 per cent in February 1992) and Manufacturing (13.0 per cent, compared with 16.8 per cent in February 1992).

In February 1994, women made up 45.6 per cent of employed wage and salary earners. In February 1992, the equivalent figure was 44.0 per cent.

(See table 9, page 8.)

Award rates of pay indexes

The annual movement from October 1993 to October 1994 of weekly award rates of pay indexes for Tasmania rose by 1.0 per cent for full-time adult females and by 0.9 per cent for full-time adult males. For Australia, the figures were 1.4 per cent for females and 1.2 per cent for males, for a combined annual increase of 1.0 per cent.

For full-time adult female employees in Tasmania, the largest industry increases over this 12 month period occurred in Recreation, personal and other services (3.0 per cent); and Manufacturing (2.4 per cent).

For the same period for full-time adult male employees in Tasmania, the largest industry increases occurred in Recreation, personal and other services (2.2 per cent); and Wholesale and retail trade (1.9 per cent).

The largest occupation increases over the same period for full-time adult female employees occurred in Plant and machine operators, and drivers (2.5 per cent); and Tradespersons (1.9 per cent).

For full-time adult male employees the largest occupation increases over the period occurred in Salespersons and personal service workers (1.9 per cent); and Labourers and related workers (1.2 per cent).

(See table 14, page 10.)

House price indexes

For the 12 months ended September 1994, Hobart recorded a 7.1 per cent increase in the cost of established houses. The extremes in price movement recorded were a 17.8 per cent increase in Darwin and a 0.8 per cent decrease in Canberra. For the same period, Hobart recorded a 2.8 per cent increase in the cost of project homes. Darwin recorded the highest increase over the period, 8.7 per cent, while Canberra recorded a decrease in costs of 1.9 per cent.

The movement recorded in Hobart for the September quarter 1994 was 1.7 per cent for established houses and 0.6 per cent for project homes.

House Price Indexes: Eight Capital Cities, September Quarter 1994, ABS Catalogue No. 6416.0, released on 9 December 1994, \$27.50

Gross State product

Tasmania's Gross State Product (GSP), increased by 0.2 per cent in the September quarter based on trend constant price estimates. The increase in GSP for the previous quarter was 0.6 per cent. The growth rate recorded for the September quarter was the lowest of all the States, and was considerably below the figure for Australia [that is, change in GDP(I)] of 1.4 per cent.

Over the 12 month period to September 1994, the GSP of Tasmania decreased by 0.2 per cent in trend constant price terms. This was clearly against the national trend, which increased by 5.7 per cent.

The low figure for GSP growth in the September quarter can be explained by the decreased growth in two of the components of GSP, these being wages, salaries and supplements, and gross operating surplus. The third component, indirect taxes less subsidies, grew strongly at 6.9 per cent, higher than the national figure of 5.0 per cent.

Australian National Accounts — State Accounts, ABS catalogue no. 5242.0, released on 15 December 1994, \$26.00

Livestock slaughtering

Trend series estimates —

The Tasmanian *trend series* estimates for slaughtering of cattle and calves, and sheep and lambs are higher in October 1994 than in September 1994, while for pigs the trend series estimate dropped.

Livestock slaughtering for cattle and calves showed an upward trend due to large numbers slaughtered in October. This trend is continuing. For October 1994 the trend series shows 18 700 cattle and calves were slaughtered. This was up 1.3 per cent on the October 1993 level of 18 400.

A high level of sheep and lambs slaughtered during recent months has pushed the trend series to high levels in recent months although the growth is slowing. The trend series estimate of 113 100 for October 1994 is 36.6 per cent above the trend series estimate of 82 800 sheep and lambs slaughtered in October 1993.

The trend for pigs slaughtered shows a peak in December 1993 and January 1994 of 8000, followed by a slight dip to July 1994. The trend has declined more steeply over the last three months. The trend series estimate of 7558 pigs slaughtered in October 1994 was 3.2 per cent down on the estimate at October 1993.

(See table 21, page 16.)

Building approvals

There were 325 new dwelling units approved during October 1994 in Tasmania, a four per cent increase on the number recorded for September 1994, but a seven per cent decrease on the figure recorded for October 1993 (351).

For the twelve months ended October 1994 there were 3970 new dwelling units approved, four per cent below the 4116 units recorded for the previous corresponding twelve months.

The latest monthly trend estimates for the number of dwelling units approved show twelve consecutive months of decline.

The highest number of dwelling units approved in October 1994 was recorded by the City of Launceston with 34, followed by the City of Clarence with 27, the Municipality of West Tamar with 24 and the City of Glenorchy with 23.

The value of new residential building approved, at current prices, in October 1994 was \$25.7 million, compared with the September 1994 figure of \$24.5 million and the October 1993 figure of \$23.6 million.

The value of new residential building approved, at average 1989-90 prices, in September quarter 1994 was \$58.1 million compared with \$58.5 million in June quarter 1994 and \$65.1 million in September quarter 1993.

(See table 27, page 19.)

Retail

Note: The retail trade survey has been redesigned. For more information see Information Paper (ABS Catalogue No. 8511.0).

The trend estimate for turnover of retail and service establishments for October 1994, in Tasmania, was \$231.5 million, an increase of slightly more than one per cent on the October 1993 figure of \$228.8 million. The monthly trend estimates have shown little or no growth over the first ten months of 1994.

The trend estimate of turnover for October 1994, for Australia (\$9347.2 million), was over eight per cent higher than for October 1993. Growth in the trend estimate of turnover was 0.9 per cent for October 1994 which is similar with the growth for each month from July.

Victoria, Queensland and South Australia have shown strong growth in retail turnover in recent months. New South Wales, Western Australia and the Australian Capital territory have shown moderate to strong growth during the three months ended October 1994.

In original terms, the estimate of retail turnover in October 1994, for Tasmania, was \$224.2 million, an increase of less than one per cent on the figure recorded for September 1994 and more than two per cent less than the figure recorded for October 1993.

(See table 35, page 23.)

New motor vehicle registrations

There were 1274 new motor vehicles (excluding motorcycles) registered in Tasmania during October 1994. This was over two per cent more than for September (1247) and 19 per cent higher than the figure recorded for October 1993. There were 178 vehicles registered by vehicle rental businesses during October 1994.

Registrations for the twelve months ended October 1994 (13 298) were nearly seven per cent more than for the twelve months ended October 1993 (12 469).

(See table 34, page 23.)

Population and Vital Statistics

Table 1. Population, Tasmania

<i>Year or quarter</i>	<i>Estimated resident population at end of period</i>	<i>Natural increase (a)</i>	<i>Net estimated migration gain</i>	<i>Total population growth</i>	<i>Annual growth rate (b)</i>
	('000)	('000)	('000)	('000)	(%)
Year ended 30 June —					
1990	462.2	3.4	3.6	6.9	1.52
1991	466.8	3.3	1.2	4.6	1.01
1992 p	469.7	3.2	0.3	2.9	0.62
1993 p	471.4	3.2	-1.5	1.8	0.37
Quarter					
1992 —					
March p	469.2	0.9	-0.1	0.8	0.72
1993 —					
March p	471.3	0.9	-0.3	0.5	0.44
June p	471.4	0.9	-0.7	0.1	0.37
September	471.9	0.7	-0.3	0.4	0.39
December	472.1	0.8	-0.5	0.2	0.29
1994 —					
March p	472.2	0.9	-0.7	0.1	0.20

(a) Excess of live births registered over deaths registered (based on usual State of residence).

(b) Percentage growth from same quarter in previous year.

Table 2. Births, deaths and marriages registered, Tasmania

<i>Year or quarter</i>	<i>Births</i>		<i>Deaths</i>		<i>Infant mortality (a)</i>		<i>Marriages</i>	
	<i>No.</i>	<i>Rate (b)</i>	<i>No.</i>	<i>Rate (b)</i>	<i>Deaths</i>	<i>Rate (c)</i>	<i>No.</i>	<i>Rate (b)</i>
Year ended								
31 December —								
1989	6 813	14.96	3 690	8.10	72	10.6	3 111	6.83
1990	7 043	15.25	3 713	8.04	63	8.9	3 026	6.55
1991	6 857	14.69	3 666	7.86	59	8.6	3 069	6.58
1992	6 956	14.81	3 722	7.92	42	6.0	3 081	6.56
1993 p	r 6 804	14.43	r 3 618	7.67	r 37	r 5.4	3 055	6.48
Quarter								
1992 —								
June	1 690	..	921	..	9	5.3	641	..
1993 —								
June	1 733	..	884	..	8	5.2	797	..
September	1 710	..	993	..	11	5.8	431	..
December	1 647	..	878	..	4	3.0	786	..
1994 —								
March	r 1 759	..	r 917	..	r 11	r 6.3	914	..
June p	1 571	..	946	..	10	6.4	829	..

(a) Registered deaths of children under one year of age. (b) Rate per 1000 of estimated mean population. (c) Rate per 1000 live births.

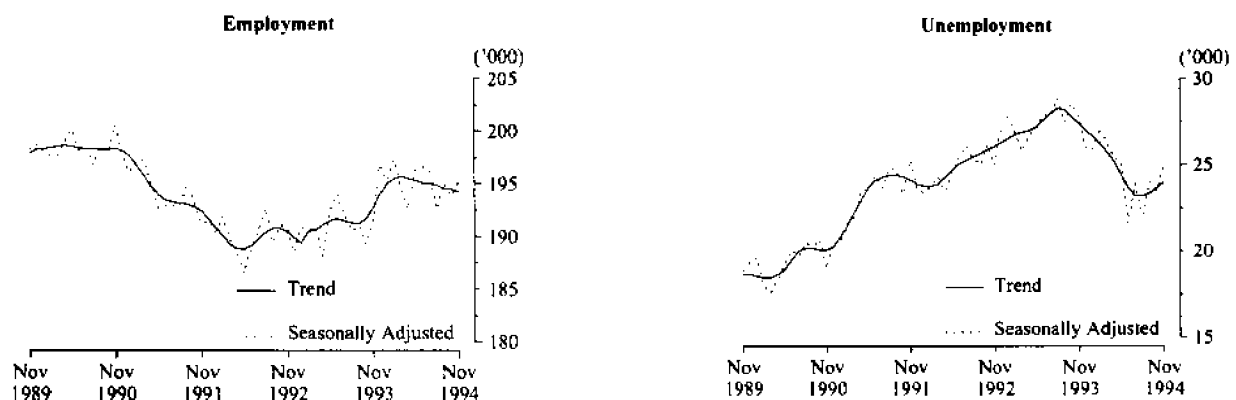
Employment and Unemployment

Table 3. Labour force status, Tasmania (a): Seasonally adjusted and trend series

Month	Seasonally adjusted series				Trend series (b)			
	Employed (<i>'000</i>)	Unem- ployed (<i>'000</i>)	Unemploy- ment rate (%)	Partici- pation rate (%)	Employed (<i>'000</i>)	Unem- ployed (<i>'000</i>)	Unemploy- ment rate (%)	Partici- pation rate (%)
MALES								
1993 -								
November	109.0	17.8	14.1	70.7	110.9	17.4	13.6	71.5
December	113.4	16.6	12.8	72.4	111.6	17.4	13.5	71.9
1994 -								
January	112.3	16.9	13.1	71.9	112.2	17.5	13.5	72.2
February	113.3	17.9	13.6	73.0	112.4	17.4	13.4	72.3
March	112.2	18.0	13.9	72.4	112.5	17.1	13.2	72.1
April	111.2	16.8	13.1	71.2	112.3	16.6	12.8	71.7
May	112.4	16.0	12.5	71.4	112.1	15.9	12.4	71.2
June	112.5	14.1	11.1	70.4	112.2	15.2	11.9	70.8
July	112.6	14.5	11.4	70.7	112.5	14.7	11.6	70.7
August	112.0	14.3	11.3	70.2	112.9	14.5	11.4	70.8
September	112.7	15.1	11.8	71.0	113.3	14.5	11.3	71.0
October	115.3	14.1	10.9	71.9	113.7	14.6	11.4	71.2
November	113.6	15.3	11.9	71.6	114.0	14.7	11.4	71.4
FEMALES								
1993 -								
November	82.2	9.9	10.8	49.6	81.8	10.0	10.9	49.5
December	83.4	9.4	10.1	49.9	82.3	9.6	10.4	49.5
1994 -								
January	83.0	9.0	9.8	49.5	82.8	9.2	10.0	49.5
February	84.2	9.1	9.8	50.2	83.1	8.9	9.7	49.5
March	82.4	8.4	9.2	48.8	83.2	8.7	9.5	49.4
April	81.5	8.7	9.6	48.4	83.2	8.6	9.4	49.4
May	83.8	9.2	9.9	50.0	83.2	8.5	9.3	49.3
June	84.1	7.5	8.2	49.2	83.0	8.5	9.3	49.1
July	83.4	9.4	10.1	49.9	82.6	8.5	9.4	48.9
August	80.6	7.8	8.8	47.5	82.0	8.7	9.6	48.7
September	82.5	8.9	9.7	49.1	81.4	8.9	9.8	48.5
October	78.6	9.4	10.7	47.2	80.8	9.1	10.1	48.3
November	81.6	9.7	10.6	49.0	80.3	9.3	10.4	48.1
TOTAL								
1993 -								
November	191.2	27.8	12.7	60.0	192.7	27.4	12.5	60.3
December	196.8	26.0	11.7	61.0	194.0	27.0	12.2	60.5
1994 -								
January	195.3	25.9	11.7	60.5	195.0	26.7	12.0	60.6
February	197.5	27.0	12.0	61.4	195.5	26.3	11.9	60.7
March	194.6	26.4	11.9	60.4	195.7	25.8	11.7	60.6
April	192.6	25.4	11.7	59.6	195.5	25.2	11.4	60.3
May	196.3	25.2	11.4	60.5	195.3	24.4	11.1	60.0
June	196.6	21.6	9.9	59.6	195.1	23.7	10.8	59.8
July	196.1	23.9	10.9	60.1	195.0	23.2	10.7	59.6
August	192.6	22.1	10.3	58.6	194.9	23.2	10.6	59.6
September	195.1	24.0	10.9	59.8	194.6	23.4	10.7	59.5
October	193.9	23.5	10.8	59.4	194.5	23.7	10.9	59.6
November	195.2	25.0	11.3	60.1	194.3	24.0	11.0	59.6

(a) For explanation of terms and concepts, refer to *The Labour Force, Australia* (Catalogue No.6203.0). (b) Trend series revised each month. Users should be aware that the latest observations may be revised substantially.

Tasmanian Labour Force



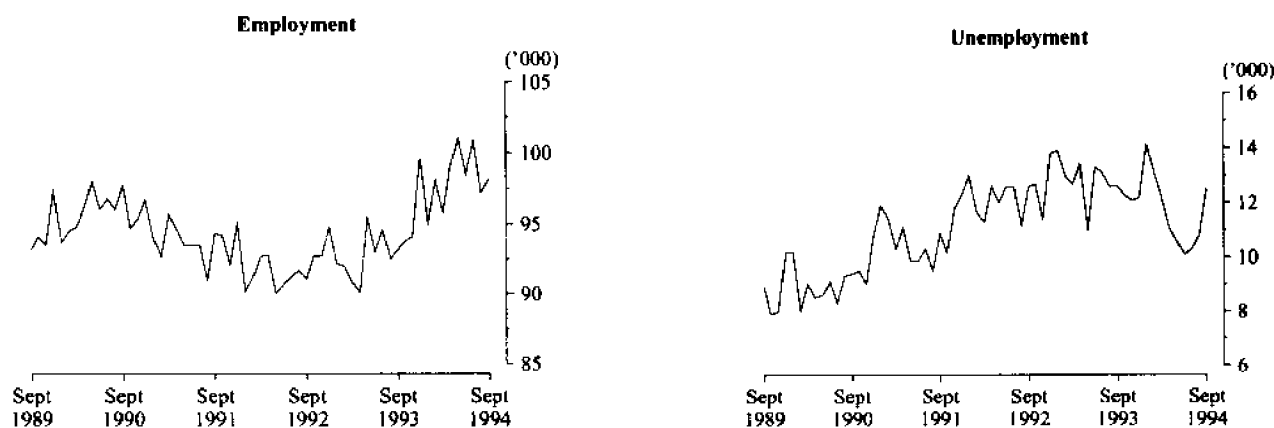
Employment and Unemployment

Table 4. Labour force status, by region and Tasmania, males (a) (b)

Month	Total employed (^{'000})	Total unemployed (^{'000})	Unem- ployment rate (%)	Partici- pation rate (%)
HOBART AND SOUTHERN STATISTICAL DIVISIONS				
1991 - September	54.4	6.7	11.0	72.0
1993 - September	52.1	7.7	12.9	69.3
1994 - July	55.3	6.0	9.8	70.1
August	54.2	6.9	11.4	69.5
September	54.3	7.9	12.6	70.6
NORTHERN STATISTICAL DIVISION				
1991 - September	33.1	3.6	9.7	75.0
1993 - September	32.8	4.5	12.1	72.2
1994 - July	31.1	4.6	12.8	71.1
August	30.2	4.5	13.0	69.1
September	31.9	4.4	12.2	71.5
MERSEY-LYELL STATISTICAL DIVISION				
1991 - September	26.8	5.6	17.2	76.1
1993 - September	25.0	4.9	16.5	72.5
1994 - July	26.8	3.4	11.4	71.5
August	26.4	3.2	10.9	70.9
September	26.6	3.3	10.9	72.6
TASMANIA				
1991 - September	114.3	15.9	12.2	73.8
1993 - September	109.9	17.1	13.5	70.9
1994 - July	113.1	14.0	11.0	70.7
August	110.8	14.7	11.7	69.7
September	112.8	15.5	12.1	71.3

(a) For explanation of terms and concepts, refer to *The Labour Force, Australia* (Catalogue No. 6203.0). (b) Data in this table are original series, i.e. they are not part of a seasonally adjusted or a trend series. Accordingly, care should be exercised when using this data. New monthly data from each quarter (March, June, September and December) is published two months after the quarter.

Hobart and Southern Statistical Divisions - Persons



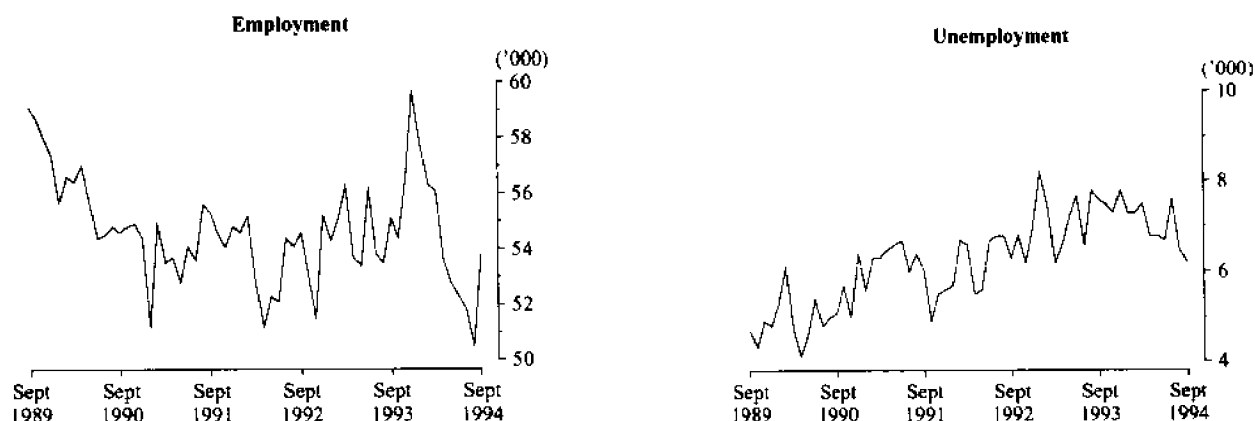
Employment and Unemployment

Table 5. Labour force status, by region and Tasmania, females (a) (b)

<i>Month</i>		<i>Total employed</i> (<i>'000</i>)	<i>Total unemployed</i> (<i>'000</i>)	<i>Unem- ployment rate</i> (<i>%</i>)	<i>Partici- pation rate</i> (<i>%</i>)
HOBART AND SOUTHERN STATISTICAL DIVISIONS					
1991 -	September	41.1	4.3	9.4	51.5
1993 -	September	42.1	5.0	10.7	51.5
1994 -	July	45.6	4.3	8.7	53.7
	August	43.0	3.8	8.2	50.7
	September	43.9	4.6	9.5	52.0
NORTHERN STATISTICAL DIVISION					
1991 -	September	22.8	2.5	9.9	50.5
1993 -	September	22.5	3.1	12.0	48.4
1994 -	July	20.7	3.0	12.6	45.2
	August	20.3	2.0	8.9	43.1
	September	21.9	1.7	7.3	45.5
MERSEY-LYELL STATISTICAL DIVISION					
1991 -	September	19.4	2.5	11.4	48.9
1993 -	September	17.5	2.7	13.3	48.9
1994 -	July	16.5	1.8	10.0	44.8
	August	16.5	1.5	8.3	43.1
	September	17.4	2.5	12.4	48.3
TASMANIA					
1991 -	September	83.3	9.2	10.0	50.6
1993 -	September	82.0	10.8	11.6	50.0
1994 -	July	82.8	9.1	9.9	49.4
	August	79.9	7.3	8.4	46.9
	September	83.2	8.8	9.6	49.4

(a) For explanation of terms and concepts, refer to *The Labour Force, Australia* (Catalogue No. 6203.0). (b) Data in this table are original series, i.e. they are not part of a seasonally adjusted or a trend series. Accordingly, care should be exercised when using this data. New monthly data from each quarter (March, June, September and December) is published two months after the quarter.

Northern Statistical Division - Persons



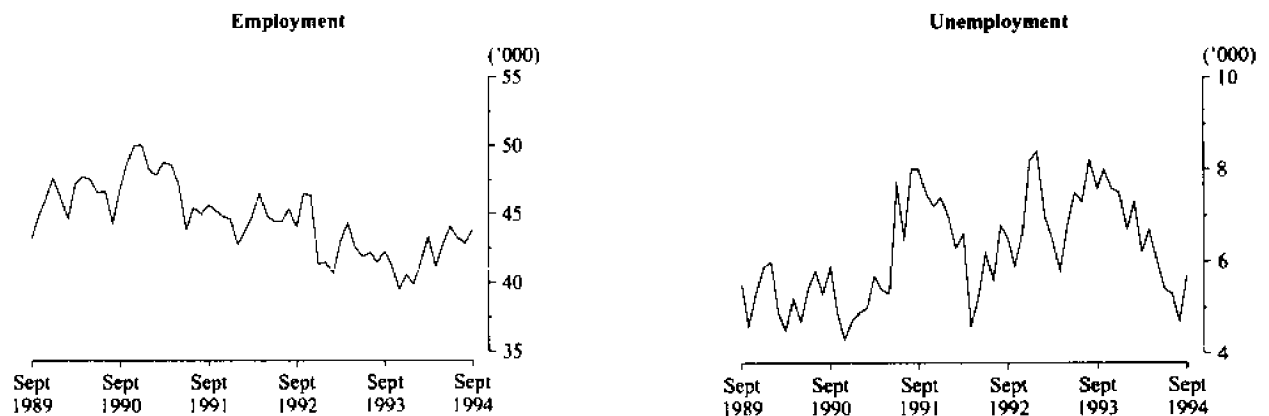
Employment and Unemployment

Table 6. Labour force status, by region and Tasmania, persons (a) (b)

Month	Total employed (^{'000})	Total unemployed (^{'000})	Unem- ployment rate (%)	Partici- pation rate (%)
HOBART AND SOUTHERN STATISTICAL DIVISIONS				
1991 - September	95.6	11.0	10.3	61.6
1993 - September	94.2	12.7	11.9	60.1
1994 - July	100.9	10.3	9.3	61.6
August	97.2	10.8	10.0	59.9
September	98.2	12.5	11.3	61.0
NORTHERN STATISTICAL DIVISION				
1991 - September	55.8	6.1	9.8	62.6
1993 - September	55.3	7.6	12.1	60.2
1994 - July	51.8	7.6	12.7	57.8
August	50.5	6.5	11.4	55.9
September	53.8	6.2	10.3	58.4
MERSEY-LYELL STATISTICAL DIVISION				
1991 - September	46.2	8.1	14.9	62.1
1993 - September	42.4	7.6	15.2	60.7
1994 - July	43.3	5.3	10.8	58.4
August	42.9	4.7	9.9	57.0
September	43.9	5.7	11.5	60.4
TASMANIA				
1991 - September	197.6	25.1	11.3	62.0
1993 - September	191.9	27.9	12.7	60.3
1994 - July	195.9	23.2	10.6	59.8
August	190.7	22.0	10.3	58.1
September	196.0	24.3	11.0	60.2

(a) For explanation of terms and concepts, refer to *The Labour Force, Australia* (Catalogue No. 6203.0). (b) Data in this table are original series, i.e. they are not part of a seasonally adjusted or a trend series. Accordingly, care should be exercised when using this data. New monthly data from each quarter (March, June, September and December) is published two months after the quarter.

Mersey Lyell Statistical Division - Persons



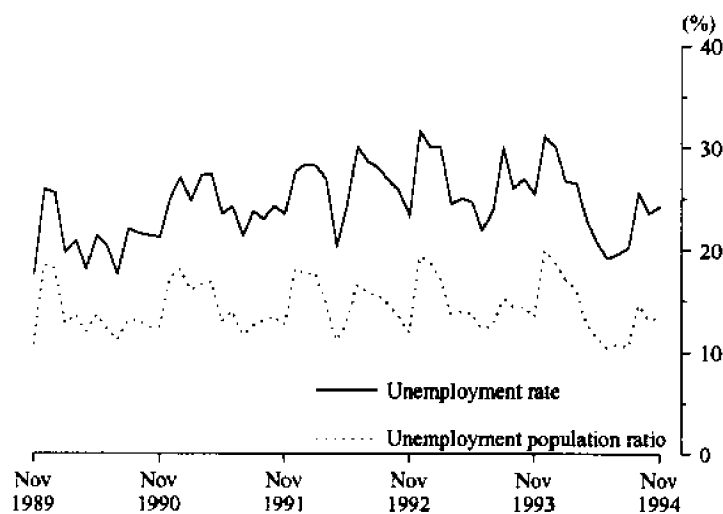
Employment and Unemployment

Table 7. Teenage labour market (a), Tasmania (b)

Month	Employed		Unemployed		Labour force	Not in labour force	Civilian population aged 15-19	Unemployment rate	Unemployment population ratio	Participation rate
	Full-time	Total	Looking for full-time work	Total						
	('000)	('000)	('000)	('000)	('000)	('000)	('000)	(%)	(%)	(%)
ATTENDING NEITHER SCHOOL NOR A TERTIARY INSTITUTION FULL TIME										
1991 - November	8.0	10.3	3.2	3.2	13.5	1.0	14.6	23.9	21.9	93.0
1993 - November	6.1	8.7	3.1	3.1	11.8	1.9	13.7	26.0	22.6	86.0
1994 - September	6.3	8.7	3.0	3.0	11.7	1.2	12.9	25.8	23.3	90.8
October	6.1	8.9	2.3	2.3	11.3	1.3	12.6	20.9	18.3	89.3
November	5.6	8.8	2.8	3.0	11.8	1.2	13.0	25.7	23.1	90.6
ATTENDING SCHOOL OR A TERTIARY INSTITUTION FULL TIME										
1991 - November	0.2	4.4	0.8	1.3	5.7	15.7	21.4	22.8	6.1	26.6
1993 - November	0.2	4.9	0.6	1.6	6.5	14.3	20.8	24.6	7.7	31.3
1994 - September	0.1	5.9	0.6	2.0	7.9	13.3	21.2	25.3	9.4	37.3
October	0.1	5.6	0.7	2.1	7.8	13.8	21.5	26.9	9.8	36.3
November	..	5.6	0.7	1.6	7.2	13.9	21.1	22.2	7.6	34.1
TOTAL										
1991 - November	8.1	14.7	4.1	4.5	19.3	16.7	36.0	23.5	12.5	53.6
1993 - November	6.3	13.6	3.7	4.7	18.3	16.2	34.5	25.5	13.6	53.1
1994 - September	6.4	14.6	3.5	5.0	19.6	14.5	34.1	25.6	14.7	57.4
October	6.2	14.5	2.9	4.5	19.0	15.1	34.1	23.6	13.2	55.7
November	5.6	14.4	3.5	4.6	19.0	15.1	34.1	24.3	13.5	55.7

(a) Persons aged 15-19 years. (b) For explanation of terms and concepts, refer to *The Labour Force, Australia* (Catalogue No. 6203.0).

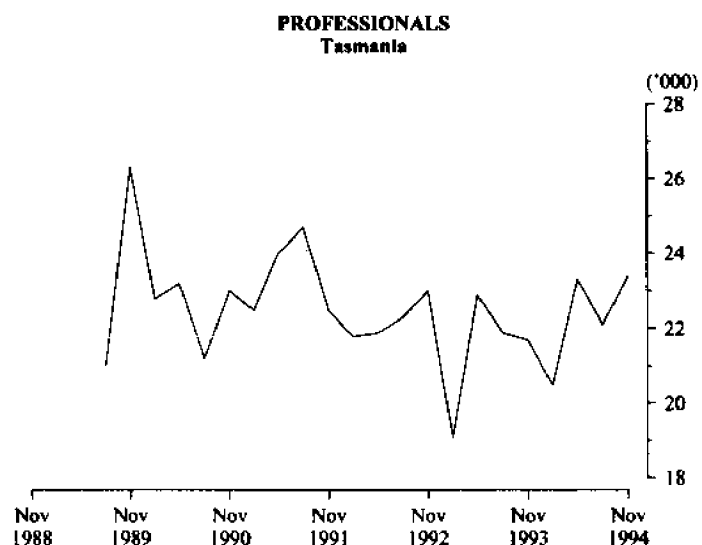
TEENAGE UNEMPLOYMENT Tasmania



Employment and Unemployment

Table 8. All employed persons, occupation, Tasmania (a)

Occupation	November 1993	November 1994			Proportion of total employed	
	Persons	Males	Females	Persons	Nov 1993	Nov 1994
	('000)	('000)	('000)	('000)	(%)	(%)
Managers and administrators	21.7	15.4	5.0	20.4	11.3	10.4
Farmers and farm managers	7.6	4.5	1.8	6.3	4.0	3.2
Managing supervisors	6.5	5.0	2.5	7.5	3.4	3.8
Other	7.6	5.9	0.7	6.6	4.0	3.4
Professionals	21.7	13.6	9.8	23.4	11.3	12.0
Building and professional engineers	2.4	2.1	0.2	2.3	1.3	1.2
Health diagnosis and treatment practitioners	2.2	1.6	1.0	2.6	1.2	1.3
School teachers	7.0	2.6	4.5	7.1	3.7	3.6
Business professionals	3.4	2.7	1.1	3.8	1.8	1.9
Other	6.7	4.6	3.0	7.6	3.5	3.9
Para-professionals	13.2	6.8	5.9	12.7	6.9	6.5
Engineering and building associates and technicians	1.8	1.1	0.2	1.4	0.9	0.7
Registered nurses	6.3	0.6	4.6	5.1	3.3	2.6
Other	5.1	5.1	1.1	6.2	2.7	3.2
Tradespersons	29.1	25.8	2.6	28.4	15.2	14.5
Metal fitting and machining tradespersons	1.9	2.6	-	2.6	1.0	1.3
Electrical and electronics tradespersons	5.1	4.0	-	4.0	2.7	2.0
Building tradespersons	8.0	7.2	-	7.2	4.2	3.7
Other	14.1	12.0	2.6	14.6	7.4	7.5
Clerks	30.8	7.6	22.8	30.5	16.1	15.6
Stenographers and typists	4.1	0.1	4.9	4.9	2.1	2.5
Receptionists, telephonists and messengers	5.0	0.3	3.6	4.0	2.6	2.0
Other	21.7	7.2	14.3	21.6	11.3	11.1
Salespersons and personal service workers	30.5	12.8	21.5	34.3	15.9	17.6
Sales representatives	2.5	1.6	0.5	2.1	1.3	1.1
Sales assistants	13.7	5.8	9.9	15.7	7.2	8.0
Other	14.3	5.4	11.1	16.5	7.5	8.4
Plant and machine operators, and drivers	16.4	13.5	2.4	15.8	8.6	8.1
Road and rail transport drivers	6.7	6.7	0.6	7.3	3.5	3.7
Machine operators	4.0	2.6	1.8	4.4	2.1	2.3
Other	5.7	4.2	0.0	4.1	3.0	2.1
Labourers and related workers	27.9	17.4	12.4	29.8	14.6	15.3
Trades assistants and factory hands	5.9	2.7	2.2	4.9	3.1	2.5
Agricultural labourers and related workers	6.0	4.6	1.8	6.4	3.1	3.3
Cleaners	6.2	1.6	4.4	6.1	3.2	3.1
Construction and mining labourers	1.8	2.4	-	2.4	0.9	1.2
Other	8.0	6.1	3.9	10.0	4.2	5.1
Total employed	191.3	112.9	82.4	195.3	100.0	100.0

(a) For explanation of terms and concepts, refer to *The Labour Force, Australia* (Catalogue No. 6203.0).

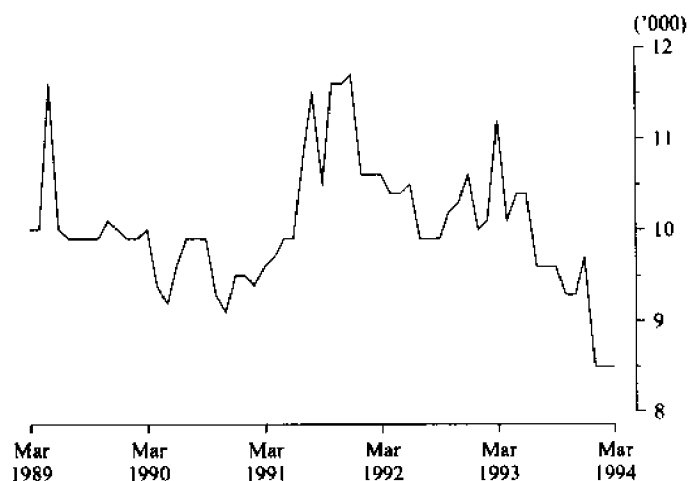
Employment and Unemployment

Table 9. Employed wage and salary earners, sector and industry, Tasmania (a)

Industry	Number of employees ('000), February 1994					Percentage distribution	
	Private	Public	Private and public			Feb. 1992	Feb. 1994
			Males	Females	Persons		
Agriculture, forestry, fishing and hunting	n.a.	0.7	n.a.	n.a.	n.a.	n.a.	n.a.
Mining	2.0	—	1.9	0.1	2.0	1.4	1.4
Manufacturing	18.0	0.1	13.5	4.6	18.1	16.8	13.0
Electricity, gas and water, construction	5.3	4.3	8.1	1.4	9.6	7.4	6.9
Wholesale and retail trade	27.4	—	15.6	11.9	27.4	19.0	19.7
Transport and storage	3.8	2.0	4.4	1.5	5.9	4.3	4.2
Communication	—	2.2	1.7	0.5	2.2	1.7	1.6
Finance, property and business services	10.2	0.9	4.8	6.4	11.2	9.1	8.1
Public administration and defence	—	8.5	5.3	3.3	8.5	7.4	6.1
Community services	16.9	24.7	15.6	26.1	41.7	24.3	30.0
Recreation, personal and other services	11.1	0.6	4.3	7.4	11.7	8.1	8.4
Total all industries	94.8	44.1	75.6	63.3	138.9	100.0	100.0

(a) For explanation of terms and concepts, refer to *Employed Wage and Salary Earners, Australia* (Catalogue No. 6248.0).

EMPLOYED WAGE AND SALARY EARNERS:
PUBLIC ADMINISTRATION AND DEFENCE INDUSTRIES
Tasmania



Employment and Unemployment

Table 10. Average hours worked, Tasmania

Month	Average weekly total hours worked, all employed persons (a)			Average weekly overtime hours (b)		Percentage of employees working overtime (b)
	Males	Females	Persons	Per employee	Per employee working overtime	
1991 —						
August	38.4	27.9	34.0	1.0	6.8	14.6
1993 —						
August	38.8	27.8	34.1	0.8	6.3	13.2
November	38.2	26.4	33.1	1.0	6.9	14.3
1994 —						
February	37.6	25.8	32.7	1.0	6.9	14.0
May	39.4	27.2	34.2	0.9	6.4	13.9
August	39.4	26.9	34.1	1.0	6.5	15.6

(a) For explanation of terms and concepts, refer to *The Labour Force, Australia* (Catalogue No. 6203.0). (b) For explanation of terms and concepts, refer to *Job Vacancies and Overtime, Australia* (Catalogue No. 6354.0).

Table 11. Job vacancies, Tasmania (a)

Period	Job Vacancies	
	Number	Rate (b) (%)
1991 —		
August	600	0.4
1993 —		
August	500	0.4
November	600	0.4
1994 —		
February	800	0.6
May	800	0.5
August	1 400	0.9

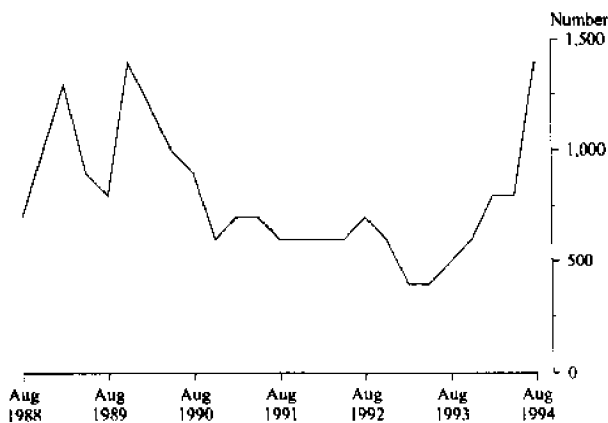
(a) For explanation of terms and concepts refer to *Job Vacancies and Overtime, Australia* (Catalogue No. 6354.0). (b) Job vacancies are expressed as a percentage of the number of job vacancies divided by the number of employees plus job vacancies.

Table 12. Industrial disputes, Tasmania (a)

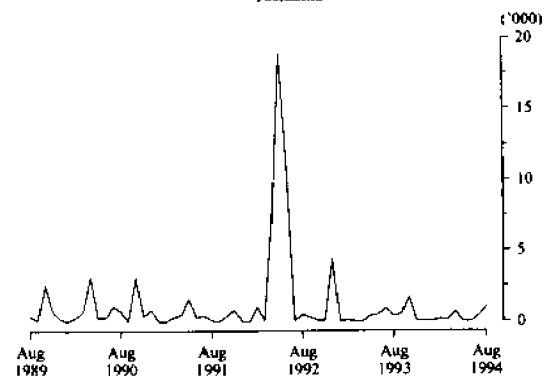
Month	Working days lost	Twelve months ending	Working days lost per thousand employees
1993 —		1993 —	
October	1 700	October	57
November	0	November	56
December	100	December	29
1994 —		1994 —	
January	0	January	31
February	200	February	30
March	100	March	30
April	700	April	35
May	0	May	33
June	0	June	30
July	400	July	27
August	1 000	August	31
Twelve months ended 1994 —			
August	4 600		

(a) For explanation of terms and concepts, refer to *Industrial Disputes, Australia* (Catalogue No. 6321.0).

JOB VACANCIES Tasmania



WORKING DAYS LOST DUE TO INDUSTRIAL DISPUTES Tasmania



Wages and Prices

Table 13. Average weekly earnings of employees, Tasmania (a) (\$)

Quarter	Survey reference period	Males			Females			Persons		
		Full-time adults		All males	Full-time adults		All females	Full-time adults		All employ- ees
		Weekly ordinary time earnings	Weekly total earnings	Weekly total earnings	Weekly ordinary time earnings	Weekly total earnings	Weekly total earnings	Weekly ordinary time earnings	Weekly total earnings	Weekly total earnings
1991 - June	17 May	563.60	593.50	535.80	477.90	484.50	357.10	536.30	558.80	457.50
1993 - June	21 May	602.70	640.10	576.10	503.70	512.60	379.10	570.60	598.80	486.20
1993 - December	19 November	624.40	659.30	599.50	518.90	525.30	391.60	588.30	613.50	501.70
1994 - March	18 February	627.60	671.60	615.20	523.50	534.70	386.70	592.90	626.00	506.70
June	20 May	621.80	662.40	602.40	526.40	537.20	387.50	589.00	619.30	499.30

(a) For explanation of terms and concepts, refer to *Average Weekly Earnings, States and Australia* (Catalogue No. 6302.2).

Table 14. Weekly award rates of pay indexes, full-time adult employees Tasmania (a)

(Base: June 1985 = 100.0)

Industry	1991	1993	1994		
	Sep	Sep	Jul	Aug	Sep
Mining	135.1	137.7	137.7	137.7	137.7
Manufacturing	140.5	145.0	147.0	147.0	147.0
Electricity, gas and water	130.9	131.9	132.0	132.0	132.0
Construction	140.2	141.3	142.6	142.6	142.6
Wholesale trade	136.0	137.6	139.9	139.9	139.9
Retail trade	133.6	136.6	139.6	139.6	139.7
Transport and storage	137.4	137.9	139.0	139.0	139.0
Communication	135.4	135.4	135.4	135.4	135.4
Finance, property and business services	135.3	137.4	137.8	137.8	137.8
Public admin. and defence	133.0	147.7	148.3	148.3	148.3
Community services	136.7	140.3	140.9	140.9	140.9
Recreation, personal and other services	140.7	146.4	150.2	150.2	150.2
Total all industries	136.4	140.5	141.6	141.7	141.7

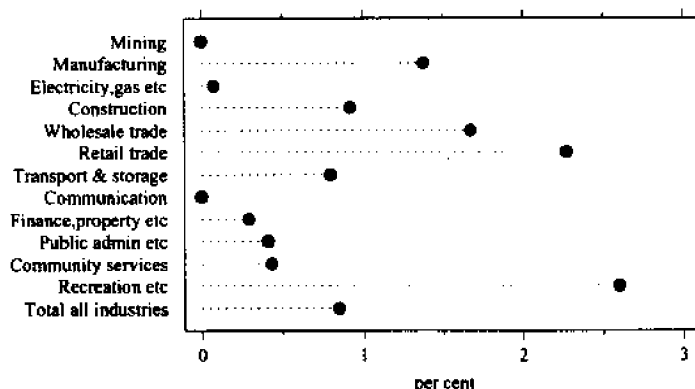
(a) For explanation of terms and concepts, refer to *Award Rates of Pay Indexes, Australia* (Catalogue No 6312.0).AWARD RATES OF PAY INDEX: TASMANIA
Annual Change to September 1994

Table 15. Summary of annual movements in wages and prices, Tasmania

<i>Period</i>	<i>CPI All groups Hobart</i>	<i>Price index of materials used in house building. All groups, Hobart</i>	<i>Price index of materials used in building other than house building. All groups, Hobart</i>	<i>Average weekly total earnings, full-time adult employees</i>	<i>Weekly award rates of pay index, full-time adult employees</i>
Percentage change from previous year					
1991 —					
October	..	3.1	3.1	..	3.1
1993 —					
October	..	2.1	2.2	..	0.3
1994 —					
February	..	2.4	1.7	4.4	1.7
March	2.6	3.1	0.5	..	1.7
April	..	3.0	1.1	..	1.7
May	..	3.3	0.9	3.4	1.7
June	2.7	p 3.7	p 1.1	..	1.7
July	..	p 2.8	p 0.7	..	1.8
August	..	p 3.3	p 0.7	n.a.	0.8
September	2.1	p 3.6	p 0.6	..	0.8
October	..	4.0	1.0	..	1.0

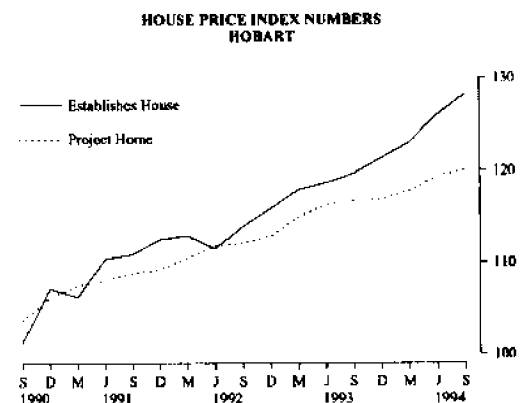
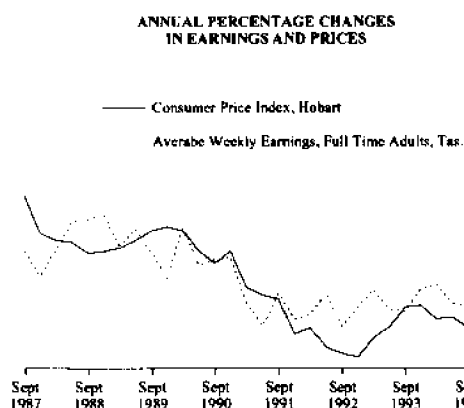
Table 16. House price index numbers (a), Hobart

(Base of each Index: 1989-90 = 100.0)

	<i>Established house price index</i>		<i>Project home price index</i>	
	<i>Index</i>	<i>% change (b)</i>	<i>Index</i>	<i>% change (b)</i>
1991-92	112.0	5.4	110.1	3.5
1992-93	116.6	4.1	114.1	3.6
1993-94	122.5	5.1	117.7	3.2
1991 —				
September	110.9	0.5	108.8	0.6
1993 —				
June	118.7	0.7	116.3	1.1
September	119.7	0.8	116.8	0.4
December	121.4	1.4	116.9	0.1
1994 —				
March	123.0	1.3	117.8	0.8
June	126.0	2.4	119.4	1.4
September	128.2	1.7	120.1	0.6

(a) Used in calculating the mortgage interest charges component of the Consumer Price Index.

(b) Percentage change over previous period.



Wages and Prices

Table 17. Consumer price index: Hobart & eight capital cities combined (a)

(Base of each index: year 1989-90 = 100.0) (b)

Year or quarter	Hobart					
	Food	Clothing	Housing (c)	Household equipment and operation	Transportation	Tobacco and alcohol
1991-92	106.1	105.7	98.8	109.1	106.9	111.5
1992-93	108.2	106.9	94.9	110.3	110.3	115.8
1993-94	111.7	106.6	94.0	111.9	112.2	133.7
Quarter 1991 —						
September	104.8	105.8	100.9	108.3	107.1	110.0
1993 —						
September	110.2	106.9	94.9	111.3	111.6	132.1
December	111.7	106.8	93.4	111.8	112.3	133.4
1994 —						
March	112.6	106.4	93.3	112.2	111.9	134.3
June	112.2	106.4	94.2	112.4	112.8	134.8
September	113.9	106.6	94.8	112.8	113.9	137.2
Percentage change between September quarter 1993 and September quarter 1994						
	+ 3.4	- 0.3	- 0.1	+ 1.3	+ 2.1	+ 3.9

Table 17. Consumer price index: Hobart & eight capital cities combined (a) (b)—continued (Base of each index: year 1989-90 = 100.0)

Year or quarter	Hobart				Weighted average of eight capital cities (c)	
	Health and personal care	Recreation and education	All groups		Index	Percentage change over previous period
			Index	Percentage change over previous period		
1991-92	122.7	106.1	107.1	+ 2.1	107.3	+ 1.9
1992-93	127.3	108.0	108.5	+ 1.3	108.4	+ 1.0
1993-94	136.1	110.2	111.7	+ 2.9	110.4	+ 1.8
Quarter 1991 —						
September	120.7	104.3	106.7	+ 0.9	106.6	+ 0.6
1993 —						
September	134.5	108.7	111.0	+ 1.5	109.8	+ 0.5
December	134.5	111.0	111.6	+ 0.5	110.0	+ 0.2
1994 —						
March	137.5	109.7	111.9	+ 0.3	110.4	+ 0.4
June	137.9	111.3	112.4	+ 0.4	111.2	+ 0.7
September	138.7	111.7	113.3	+ 0.8	111.9	+ 0.6
Percentage change between September quarter 1993 and September quarter 1994						
	+ 3.1	+ 2.8	+ 2.1	..	+ 1.9	..

(a) Further information on construction of CPI indexes is contained in the bulletin *The Australian Consumer Price Index Concepts, Sources and Methods* (Catalogue No. 6461.0). (b) The CPI is now published on a reference base of 1989-90 = 100.0. (c) Series from and including March 1989 has been affected by the change in treatment of mortgage interest charges.

Table 18. Price index of materials used in building other than house building: Hobart (Base year: 1989-90 = 100.0) (a)

Year or month	Index numbers for selected major building materials					
	Structural timber	Clay bricks	Ready mixed concrete	Precast concrete products	Steel decking, cladding etc.	Structural steel
1991-92	105.5	108.0	109.8	109.6	102.9	109.5
1992-93	108.2	111.9	113.4	109.9	104.2	111.7
1993-94 p	115.9	114.2	117.5	112.9	106.4	116.0
1991 —						
October	105.0	106.5	107.8	109.6	102.9	109.5
1993 —						
October	114.5	112.8	117.6	110.4	106.0	116.0
1994 —						
February	114.9	115.5	116.7	110.3	106.0	116.0
March	119.2	115.5	119.0	110.3	106.0	116.0
April	120.3	115.5	118.7	120.6	107.6	116.0
May	120.3	115.5	119.4	120.6	107.7	116.0
June p	122.6	115.6	117.9	120.6	107.7	116.0
July p	123.4	115.6	119.6	120.6	107.7	116.0
August p	123.6	115.6	118.1	120.6	107.7	116.0
September p	123.4	115.6	117.7	122.4	107.7	116.0
October p	123.9	115.6	118.6	122.4	107.7	116.0
Percentage change between October 1993 and October 1994						
	+ 8.2	+2.5	+ 0.9	+ 10.9	+ 1.6	+ 0.0

Table 18. Price index of materials used in building other than house building: Hobart—*continued* (Base year: 1989-90 = 100.0) (a)

Year or month	Index numbers for selected major building materials						
	Reinforcing steel bar, fabric and mesh	Aluminium windows	Fabricated steel products (b)	Builders' hardware	Sand & aggregate	Paint & other coatings	Non-ferrous pipes & fittings
1991-92	108.0	98.7	105.2	111.9	123.6	112.3	111.9
1992-93	109.0	97.9	102.1	113.0	125.0	114.7	132.6
1993-94	109.1	100.5	106.6	115.7	129.6	114.1	133.1
1991 —							
October	103.5	98.6	105.1	110.8	123.6	112.1	109.8
1993 —							
October	109.4	101.9	106.8	114.3	129.3	114.6	131.0
1994 —							
February	109.2	103.2	106.1	115.6	129.3	114.0	129.8
March	108.0	98.6	106.1	117.0	129.3	114.0	129.8
April	107.9	96.9	106.1	117.5	129.7	114.1	132.9
May p	107.9	96.9	106.1	116.6	129.7	114.8	132.9
June p	107.9	97.6	106.1	116.9	132.7	114.8	162.9
July p	107.9	97.6	106.1	113.0	132.7	114.8	151.6
August p	107.3	99.6	106.1	111.1	132.7	116.5	155.4
September p	107.2	99.6	106.1	108.8	132.7	116.9	155.5
October p	107.2	99.6	106.1	111.0	133.1	117.0	162.7
Percentage change between October 1993 and October 1994							
	- 2.0	- 2.3	0.7	- 2.9	+ 2.9	+ 2.1	+ 24.2

(a) The Price Index of Materials Used in Building Other than House Building is now published on a reference base of 1989-90 = 100.0.

(b) Previously 'Steel windows, doors, louvres and other fabricated steelwork'.

Wages and Prices

Table 18. Price index of materials used in building other than house building: Hobart— *continued* (Base year: 1989–90 = 100.0) (a)

<i>Index numbers for special combination of building materials</i>						
<i>Period</i>	<i>All electrical materials</i>		<i>All mechanical services</i>		<i>All plumbing materials</i>	
	<i>Index</i>	<i>% change over previous period</i>	<i>Index</i>	<i>% change over previous period</i>	<i>Index</i>	<i>% change over previous period</i>
1991–92	105.6	+ 2.3	107.5	+ 2.7	108.8	+ 3.3
1992–93	103.3	– 2.2	108.1	+ 0.6	111.4	+ 2.4
1993–94	104.7	+ 1.4	109.6	+ 1.4	110.1	– 1.2
1991 —						
October	106.9	– 0.6	107.4	—	108.0	– 0.8
1993 —						
October	105.1	—	110.0	+ 0.4	107.9	– 1.9
1994 —						
February	103.4	1.1	109.4	– 0.5	107.8	1.4
March	103.2	– 0.2	109.6	+ 0.2	107.8	—
April	105.0	+ 1.7	109.8	+ 0.2	109.5	+ 1.6
May p	105.1	+ 0.1	109.7	– 0.1	110.3	+ 0.7
June p	105.9	+ 0.8	111.0	+ 1.2	120.2	+ 9.0
July p	106.5	+ 0.6	110.8	0.2	116.2	– 3.3
August p	106.9	+ 0.4	111.0	+ 0.2	118.1	+ 1.6
September p	107.1	+ 0.2	111.1	+ 0.1	118.1	—
October p	107.5	+ 0.4	111.3	+ 0.2	121.6	+ 3.0
Percentage change between October 1993 and October 1994						
	+ 2.3	..	+ 1.2	..	+ 12.7	..

Table 18. Price index of materials used in building other than house building: Hobart— *continued* (Base year: 1989–90 = 100.0) (a)

<i>Index numbers for special combinations of building materials</i>				
<i>Period</i>	<i>All groups excluding electrical materials and mechanical services</i>		<i>All groups</i>	
	<i>Index</i>	<i>% change over previous period</i>	<i>Index</i>	<i>% change over previous period</i>
1991–92	107.2	+ 3.3	107.1	+ 3.1
1992–93	109.1	+ 1.8	108.2	+ 1.1
1993–94	111.0	+ 1.8	110.1	+ 1.8
1991 —				
October	106.1	– 0.3	106.4	+ 0.3
1993 —				
October	111.1	– 0.2	107.2	– 2.8
1994 —				
February	111.3	—	110.1	– 0.2
March	109.7	– 1.4	108.9	– 1.1
April	110.7	+ 0.9	109.8	+ 0.8
May	110.9	+ 0.2	110.0	+ 0.2
June p	111.3	+ 0.4	110.5	+ 0.5
July p	111.6	+ 0.3	110.8	+ 0.3
August p	111.6	—	110.9	+ 0.1
September p	111.7	+ 0.1	111.0	+ 0.1
October p	112.2	+ 0.4	111.4	+ 0.4
Percentage change between October 1993 and October 1994				
	+ 0.1	..	+ 3.9	..

(a) The Price Index of Materials Used in Building Other than House Building is now published on a reference base of 1989–90 = 100.0.

Table 19. Miscellaneous indicators of production, Tasmania

Year or month	Dairy products (a)			Staff-hours worked (b)	
	Whole milk (e)	Factory butter (f)	Factory cheese	Textile manufacturing (g)	Vegetable preserving
	(million litres)	(tonnes)	(tonnes)	('000)	('000)
1991-92	371.9	5 589	20 022	1 549	2 068
1992-93	412.9	6 287	20 043	1 740	1 915
1993-94	447.3	7 846	22 461	1 575	2 002
1991 — September	31.1	347	1 618	113	181
1993 — September	40.5	714	2 196	127	150
1994 — July	10.2	335	551	148	153
August	19.7	363	454	149	149
September	44.3	680	1 103	146	161

Table 19. Miscellaneous indicators of production, Tasmania
— continued

Year or month	Ready- mixed	News- print	Refined zinc	Metal refin. index (d)	Chemical and fertilisers				Gas
	concrete				Sulphuric acid	Super phosphate	Elect- ricity		
	(c)								
	('000 m ³)	('000 tonnes)	('000 tonnes)		('000 tonnes)	('000 tonnes)	(million kW.h)	('000 (MJ)	
1991-92	245.6	202.8	206.0	110.0	359.1	75.9	8 967	63 377	
1992-93	254.4	228.4	212.0	109.4	355.5	74.6	8 864	61 432	
1993-94	262.5	208.9	193.8	105.5	362.0	74.4	8 855	55 767	
1991 — September	21.3	17.9	16.9	99.0	30.9	1.1	767	5 877	
1993 — September	19.7	20.3	16.6	110.3	34.7	4.1	771	5 342	
1994 — July	20.4	18.2	17.7	103.4	30.3	3.5	810	6 476	
August	23.6	16.9	15.8	98.7	27.7	(h) 0.2	797	6 447	
September	n.a.	13.6	16.2	98.6	26.9	n.p.	752	5 056	

(a) Source: Australian Dairy Corporation. (b) Changing productivity per staff-hour makes these indicators unsatisfactory for long-term comparisons. (c) For sale as such; excludes production for use within the same enterprise and production from enterprises employing less than four persons. (d) Metallurgical refining index (Base: 1979-80 = 100.0) Output from selected establishments covering the smelting and refining of ferro-alloys, zinc and aluminium. The weighting pattern is based on the establishments' value added as derived from the 1979-80 Manufacturing Census. For multi-product establishments, value added was apportioned to products on the basis of gross receipts from each product. (e) Includes the whole milk equivalent of farm cream intake. (f) Includes butter equivalent of butter oil. (g) Includes spinning, weaving and carpetmaking. Reported by establishments which manufacture textiles only, or manufacture clothing and textiles in the one plant. (h) Production low due to annual close-down.

Production

Table 20. Livestock slaughtering, Tasmania: numbers ('000)

Year or month	<i>Cattle</i>			<i>Sheep</i>	<i>Lambs</i>	<i>Pigs</i>
	<i>Bulls, bullocks and steers</i>	<i>Cows and heifers</i>	<i>Calves</i>			
1991-92	104.7	93.6	32.3	446.7	489.8	84.8
1992-93	99.0	90.4	32.7	473.4	456.5	92.5
1993-94	101.8	85.2	23.2	526.1	437.8	95.8
1991 —						
October	6.8	4.4	5.8	26.6	41.2	7.5
1993 —						
October	7.7	6.4	2.7	31.1	30.0	6.4
November	7.7	7.3	0.3	39.7	32.0	7.9
December	9.8	8.4	0.1	46.0	39.6	11.2
1994 —						
January	8.7	6.1	0.1	50.1	34.1	6.6
February	7.6	6.9	0.1	60.4	38.1	6.6
March	11.4	8.1	0.1	68.6	49.0	8.2
April	9.5	8.3	0.2	41.3	37.6	7.5
May	9.5	9.1	0.2	49.6	38.7	7.8
June	8.8	7.5	0.4	55.3	52.6	9.9
July p	6.4	5.3	1.4	31.7	39.3	7.6
August p	5.9	4.3	8.4	20.9	36.9	7.2
September p	6.3	5.7	11.6	39.4	37.2	7.9
October p	6.2	6.9	2.9	36.2	30.4	6.7

Table 21. Livestock slaughtering, Tasmania: Seasonally adjusted and trend series

Month	<i>Seasonally adjusted</i>			<i>Trend series (a)</i>		
	<i>Cattle and calves</i>	<i>Sheep and lambs</i>	<i>Pigs</i>	<i>Cattle and calves</i>	<i>Sheep and lambs</i>	<i>Pigs</i>
1991 —						
October	17 781	84 008	7 313	18 886	80 039	6 962
1993 —						
October	18 541	84 927	6 443	18 424	82 784	7 810
November	16 861	73 652	8 017	18 404	80 419	7 939
December	21 006	77 950	8 711	18 127	77 139	8 004
1994 —						
January	16 899	69 764	8 653	17 759	74 492	8 024
February	15 688	76 627	7 679	17 331	73 905	7 990
March	17 716	85 883	7 512	16 806	75 753	7 908
April	16 493	65 114	7 361	16 340	80 600	7 853
May	16 510	77 913	7 944	16 107	87 194	7 839
June	17 095	115 865	8 709	16 250	94 459	7 883
July	13 316	91 693	7 653	16 652	101 122	7 883
August	17 070	106 612	7 502	17 231	106 421	7 804
September	20 514	126 054	8 045	17 908	110 087	7 686
October	18 826	96 647	7 134	18 662	113 085	7 558

(a) Trend estimates may be revised as data for later months become available.

Table 22. Meat production, Tasmania

(tonnes)

Year or month	Meat (carcass weight)					Total
	Beef	Veal	Mutton	Lamb	Pigmeat (a)	
1991-92	45 266	665	8 355	8 070	5 168	67 524
1992-93	44 925	692	8 949	7 456	5 749	67 770
1993-94	47 458	515	9 992	7 047	6 019	71 031
1991 —						
October	2 414	115	490	675	462	4 156
1993 —						
October	3 520	60	577	479	384	5 020
November	3 780	6	759	506	480	5 531
December	4 555	2	874	635	686	6 752
1994 —						
January	3 966	1	959	550	414	5 891
February	3 784	1	1 208	586	411	5 990
March	5 117	3	1 317	804	514	7 754
April	4 537	5	784	616	477	6 419
May	4 970	8	929	634	470	7 011
June	3 962	10	1 030	864	728	6 594
July	2 789	39	628	715	334	4 505
August	2 449	207	415	686	514	4 272
September	2 824	424	773	386	549	4 955
October	3 160	125	723	565	474	5 047

(a) Includes pork used for production of bacon and ham.

Table 23. Principal mineral concentrates produced, Tasmania

(Source: Tasmanian Development and Resources)

('000 tonnes)

Year or quarter	Concentrate							
	Copper	Iron (pellets)	Iron pyrite	Lead	Lead-copper	Lead-zinc	Tin	Tungsten
1991-92	97.4	1 451.6	80.2	86.2	5.5	84.9	10.7	0.5
1992-93	107.6	1 458.9	94.5	90.7	1.2	69.5	12.1	0.0
1993-94	128.1	1 565.9	87.9	93.4	0.0	57.5	13.4	0.0
1991 —								
June	21.1	226.2	13.3	19.5	1.8	14.6	1.8	0.3
1993 —								
March	26.4	305.0	23.4	22.5	0.0	17.9	2.3	0.0
June	29.7	381.6	26.4	22.4	0.0	22.0	3.4	0.0
September	28.9	440.9	24.0	29.4	0.0	21.8	3.4	0.0
December	31.1	384.8	20.7	24.8	0.0	13.4	3.7	0.0
1994 —								
March	31.1	307.5	20.3	16.1	0.0	8.2	3.0	0.0
June	37.0	432.7	22.9	23.2	0.0	14.0	3.3	0.0

Production

Table 24. Sawmills and plywood mills: Logs delivered and timber produced, Tasmania ('000 m³)

		Tasmanian-grown logs delivered				Sawn, peeled and sliced timber produced (a)					
		Hardwoods		Softwoods		Hardwoods		Softwoods			
Year or quarter		Other hardwoods	Plantation	Natives	Total	Other hardwoods	Plantation	Natives	Total		
	Eucalypts	(b)	(c)	(d)		Eucalypts	(b)	(c)		(d)	
1991-92		470.4	8.6	325.0	1.6	805.6	162.8	3.7	130.1	0.4	297.1
1992-93		554.5	13.0	312.8	2.8	883.2	188.9	2.9	131.6	0.7	324.1
1993-94		572.2	15.3	299.2	1.5	888.1	200.2	3.1	141.1	0.5	344.8
1992	September	129.2	2.9	90.6	1.9	224.7	48.7	0.7	38.2	0.3	88.0
	December	133.1	2.1	81.0	0.2	216.5	46.9	0.7	33.7	0.2	81.5
1993	March	125.9	3.9	72.9	0.3	203.0	41.4	0.7	30.6	0.1	72.7
	June	166.3	4.1	68.3	0.3	239.0	52.0	0.8	29.0	0.1	81.9
	September	158.9	2.0	75.6	0.4	236.9	53.5	0.7	33.8	0.1	88.1
	December	129.8	3.8	70.3	0.3	204.2	49.5	0.7	35.1	0.1	85.5
1994	March	137.2	5.0	77.3	0.4	219.8	45.7	0.6	38.1	0.1	84.5
	June	146.3	4.5	76.0	0.4	227.2	51.3	1.1	34.1	0.2	86.7
	September	164.6	3.6	75.1	0.6	244.0	58.2	1.1	34.6	0.1	94.0

(a) Includes plywood, veneer and sliced timber production converted to an equivalent cubic measurement. (b) Includes blackwood, myrtle, sassafras etc. (c) Radiata pine. (d) Includes Huon pine, celery top pine and King William pine.

Table 25. Chipping and grinding of wood (a), Tasmania

Year or quarter	Materials used ('000 m ³) (c)				Chipped and ground wood production ('000 tonnes green weight)
	Producing locations (no.) (b)	Logs delivered (d)	Sawmill offcuts		
1991-92	33	3 173.1	283.8		3 356.0
1992-93	31	3 350.6	295.8		3 565.8
1993-94	30	3 448.8	339.8		3 726.1
1992 —	September	32	886.9	82.6	957.9
	December	32	756.0	75.1	820.6
1993 —	March	31	805.0	62.2	826.7
	June	30	902.7	76.0	960.6
	September	31	970.4	88.3	1 027.9
	December	31	818.5	96.9	885.8
1994 —	March	31	818.3	71.3	868.3
	June	30	841.6	83.3	944.0
	September	30	939.8	86.3	991.3

(a) Both hardwoods and softwoods, separate details are not available. (b) Capable of producing at end of year or actually producing during quarter. (c) Data reported by weight, converted to cubic measure by the factor 0.95 m³ per tonne. (d) Includes log equivalent of limbwood and billets.

Table 26. Logs delivered for milling or chipping, Tasmania ('000 m³)

Year or quarter	Sawmilling and plywood milling			Chipping and grinding (a)			Total		
	Crown land (b)	Private land	Total	Crown land (b)	Private land	Total	Crown land (b)	Private land	Total
1991-92	608.5	197.1	805.6	1 757.2	1 415.9	3 173.1	2 365.7	1 613.0	3 978.7
1992-93	698.9	184.3	883.2	1 753.4	1 597.2	3 350.6	2 452.3	1 781.5	4 233.7
1993-94	691.6	196.6	888.1	1 697.0	1 751.8	3 448.8	2 388.8	1 948.4	4 336.9
1992 —	September	183.2	41.4	224.7	434.9	452.0	618.2	493.4	1 111.6
	December	173.2	43.3	216.5	408.0	348.0	581.2	391.2	972.5
1993 —	March	150.6	52.4	203.0	437.1	367.9	805.0	587.8	1 008.0
	June	191.8	47.2	239.0	473.3	429.4	902.7	665.1	1 141.7
	September	180.3	56.5	236.9	488.1	482.2	970.4	668.5	1 207.2
	December	160.6	43.6	204.2	417.5	401.0	818.5	578.1	1 022.8
1994 —	March	169.7	50.1	219.8	393.7	424.6	818.3	563.4	1 038.1
	June	180.9	46.4	227.2	397.7	443.9	841.6	578.6	1 068.8
	September	194.6	49.4	244.0	481.0	458.8	939.8	675.6	1 183.7

(a) Logs used are generally below sawmilling standard; includes log equivalent of limbwood and billets. (b) Comprises all areas (including concession areas) from which royalties are payable to the Forestry Commission.

Table 27. Building approvals, Tasmania

Year or month	New residential building			Value of total dwelling units (\$'000)	Value of alter- ations and additions (a) to residential building (\$'000)	Value of non-residential building (b)		Total value of building (\$'000)
	No. of houses	No. of other residential buildings (c)	Total no. of dwelling units			Private (\$'000)	Total (\$'000)	
1991-92	2 869	1 034	3 903	260 296	32 637	68 980	105 941	398 873
1992-93	2 956	1 138	4 094	275 262	33 050	62 416	103 107	411 419
1993-94	3 113	1 034	4 147	301 963	39 522	81 251	145 922	487 407
1991— October	297	51	348	24 066	3 729	4 431	8 453	36 249
1993 — October	247	104	351	23 556	3 510	2 913	4 430	31 495
1994 — July	212	97	309	20 883	3 213	6 161	7 121	31 217
August	257	34	291	23 162	3 454	11 251	12 028	38 643
September	256	57	313	24 504	4 451	6 195	7 763	36 719
October	265	60	325	25 686	3 963	7 981	9 340	38 988

(a) Valued at \$10 000 and over. (b) Comprises non-residential building (new plus alterations and additions) valued at \$30 000 and over from July 1988, and valued at \$50 000 and over from July 1990. Previous figures are for values of \$10 000 and over. (c) New individual dwelling units (e.g. flats, home units and villa units).

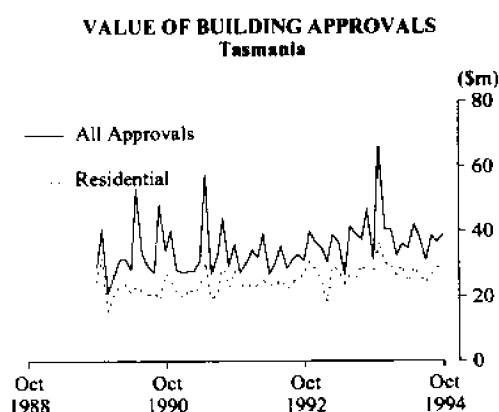


Table 28. Dwelling commencements, Tasmania

Year or month	New residential building						No. of other residential buildings (a)	Total no. of dwell- ing units
	No. of houses							
	Double brick	Brick veneer	Fibre cement	Timber	Other and not stated	Total houses		
1991-92	238	1 866	67	500	78	2 749	1 024	3 773
1992-93	277	1 933	103	447	65	2 825	1 129	3 954
1993-94	306	2 120	103	441	79	3 049	973	4 022
1991 — September	21	165	3	34	3	226	74	300
1993 — September	46	189	9	54	5	303	80	383
1994 — June	22	192	14	31	9	268	77	345
July	15	168	9	25	9	226	87	313
August	14	156	5	26	5	206	27	233
September	21	188	11	32	3	255	63	318

(a) New individual dwelling units (e.g. flats, home units and villa units).

Table 29. Banking statistics, Tasmania (a) (b) (\$m)

Month	Deposits				Statement savings accounts
	Current bearing interest	Current – not bearing interest	Fixed	Investment savings accounts	
1994 —					
January	526	301	1 213	605	198
February	516	292	1 231	605	196
March	520	309	1 204	600	193
April	512	319	1 194	604	195
May	509	301	1 208	605	196
June	514	303	1 232	609	197
July	519	310	1 256	614	199
August	516	304	1 346	616	199
September	517	305	1 379	619	202
October	531	304	1 377	622	202

Table 29. Banking statistics, Tasmania (a) (b) — continued (\$m)

Month	Deposits — continued			Loans (c)
	Passbook/School savings accounts	Other	Total	
1994 —				
January	263	159	3 265	3 585
February	261	160	3 261	3 629
March	256	162	3 244	3 646
April	256	161	3 242	3 673
May	253	158	3 230	3 718
June	251	157	3 263	3 841
July	249	150	3 297	3 872
August	244	152	3 375	3 886
September	237	150	3 408	3 883
October	231	153	3 420	3 920

(a) Due to changes to the *Banking Act 1959* in December 1989, which removed the distinction between trading and savings banks, figures previously published in this table are no longer comparable with those shown above. (b) Details are the averages of weekly figures for each month. The figures are derived from returns submitted by banks authorised under the *Banking Act* together with similar returns voluntarily submitted by the State banks; they exclude the Reserve Bank. (c) Excludes non-resident loans.

Table 30. Private new capital expenditure by type of asset, Tasmania (a) (\$m)

Year or quarter	New buildings and structures	Equipment, plant, and machinery	Total
1989–90	88	487	575
1990–91	180	416	596
1991–92	79	359	438
1992–93	103	340	443
1993–94	61	252	313
1993 —			
March	35	58	93
June	35	88	123
September	17	76	94
December	14	71	85
1994 —			
March	12	42	54
June	18	63	80

(a) Estimates based on a sample survey and therefore subject to sampling variability. Covers selected industries only — mining, manufacturing, finance, property and other selected industries.

Table 31. Passenger arrivals and departures, Tasmania (a)

(Source: Department of Tourism, Sport & Recreation)

Period	Arrivals				Cruise ships		
	By air		By sea	Total	Total departures (b)	Arrivals	Departures
	Interstate	Inter-national					
1990	555 631	8 629	120 004	684 264	679 833	3 255	3 255
1991	625 366	5 897	131 375	762 638	764 731	6 720	6 663
1992	652 092	4 428	114 969	771 489	761 109	4 608	4 608
1993	694 244	5 144	115 381	814 769	814 835	2 033	2 033
1993 —							
September	62 578	379	9 415	72 372	58 126	—	—
1994							
July	52 995	186	6 983	60 164	63 737	—	—
August	p 50 549	250	7 199	p 57 998	p 62 079	—	—
September	p 69 138	340	13 430	p 82 908	p 66 659	—	—

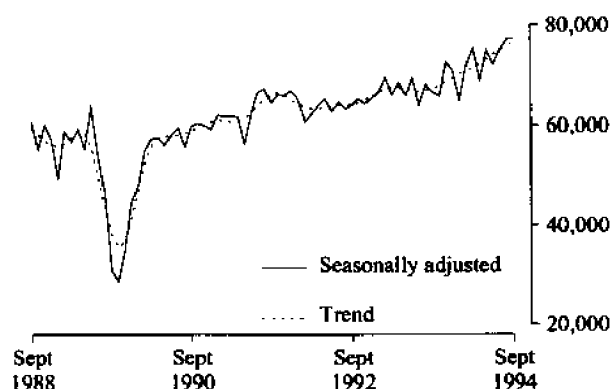
(a) The following persons are not included in these statistics: passengers under three years of age accompanied by an adult; passengers travelling on chartered flights with minor carriers; passengers travelling on private or VIP flights; and passengers from or departing for overseas other than direct flights to New Zealand. (b) The proportion of departing passengers who were visitors was shown to be about 58 per cent in the 1981 Tasmanian Visitor Survey, 55 per cent in the 1984 Tasmanian Visitor Survey, about 53 per cent in the 1986 Tasmanian Visitor Survey, almost 65 per cent in the 1990 Tasmanian Visitor Survey, and just over 58 per cent in the 1993 Tasmanian Visitor Survey.

Table 32. Total passenger arrivals by air and sea into Tasmania

Period	Original	Seasonally adjusted (a)	Trend
1993 —			
September	72 372	66 639	67 385
1994 —			
July	60 164	75 220	75 132
August	p 57 998	p 77 344	p 76 023
September	p 82 908	p 77 466	p 76 877

(a) There is an annual recalculation of seasonal adjustment factors to include the most recent year's arrivals. This occurs at the end of each financial year and may cause revisions to previously published seasonally adjusted and trend figures. A full time series of seasonally adjusted and trend series from January 1971 is available on request telephone (002) 20 5870.

TOTAL ARRIVALS IN TASMANIA



Source: Dept. of Tourism, Sport & Recreation

Table 33. Accommodation statistics, Tasmania

Hotels, motels, etc. with facilities

Period	Number of establishments	Guest rooms	Room nights		Room occupancy rate	Takings from accommodation
			Seasonally adjusted	Trend estimates		
					(%)	(\$'000)
September quarter —						
1992	176	5 178	n.a.		37.1	12 045
1993	190	5 266			38.5	12 878
1994	174	5 316			43.5	15 229
1992 —						
July	n.a.	n.a.	73 178	74 701	33.1	3 487
August	n.a.	n.a.	76 541	74 955	32.8	3 540
September	176	5 178	77 846	75 227	45.8	5 018
1993 —						
July	n.a.	n.a.	80 240	79 630	34.8	3 820
August	n.a.	n.a.	78 961	80 374	34.4	3 770
September	190	5 266	81 774	81 309	46.5	5 288
1994 —						
July	n.a.	n.a.	92 897	90 877	40.6	4 711
August	n.a.	n.a.	90 625	91 217	38.5	4 443
September	174	5 316	91 936	91 544	51.6	6 074

Holiday units

Period	Number of establishments	Number of units	Unit nights		Unit occupancy rate	Takings from accommodation
			Seasonally adjusted	Trend estimates		
					(%)	(\$'000)
September quarter —						
1992	45	732	n.a.		39.1	1 645
1993	45	726			42.0	1 694
1994	53	804			42.5	2 044
1992 —						
July	n.a.	n.a.	11 342	11 070	35.0	479
August	n.a.	n.a.	11 095	11 200	33.3	446
September	45	732	10 924	11 329	49.2	719
1993 —						
July	n.a.	n.a.	11 022	11 763	34.5	462
August	n.a.	n.a.	12 183	11 850	36.7	481
September	45	726	12 189	11 965	55.3	751
1994 —						
July	n.a.	n.a.	12 974	13 210	36.7	583
August	n.a.	n.a.	12 927	13 110	35.2	550
September	53	804	13 534	13 038	55.9	911

Caravan parks

Period	Number of establishments	Number of sites and cabins (a)	Site occupancy rate (b)	Takings from accommodation
			(%)	(\$'000)
September quarter —				
1992	66	6 399	23.9	889
1993	67	6 366	25.4	996
1994	75	6 924	25.8	1 036
1992 —				
July	n.a.	n.a.	23.3	261
August	n.a.	n.a.	23.3	269
September	66	6 399	25.0	359
1993 —				
July	n.a.	n.a.	24.4	273
August	n.a.	n.a.	24.6	302
September	67	6 366	27.4	421
1994 —				
July	n.a.	n.a.	24.8	294
August	n.a.	n.a.	25.2	303
September	75	6 924	27.5	439

(a) At end of quarter. (b) Break in series from July quarter 1992.

Table 34. Registrations of new motor vehicles (a), Tasmania

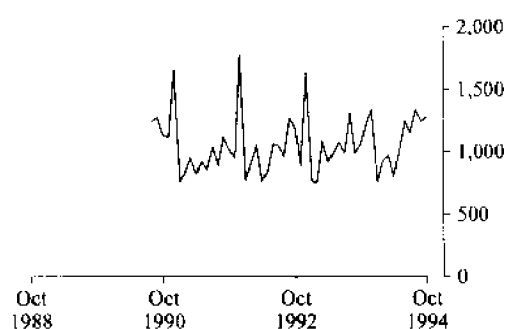
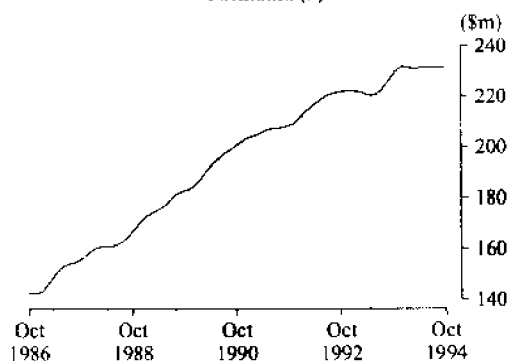
<i>Year or month</i>	<i>Passenger vehicles</i>	<i>Other vehicles (b)</i>	<i>Motor cycles</i>	<i>Total</i>
1991	9 572	2 395	394	12 361
1992	9 881	2 555	371	12 807
1993	10 019	2 478	440	12 937
1992 October	977	215	28	1 220
1993 — November	1 027	206	43	1 276
December	1 128	205	86	1 419
1994 — January	623	143	25	791
February	734	195	38	967
March	729	238	32	999
April	591	215	30	836
May	743	274	28	1 045
June	860	383	25	1 268
July	944	208	29	1 181
August	1 089	242	33	1 364
September	1 048	199	30	1 277
October	1 024	250	26	1 300

(a) Includes State and Commonwealth Government-owned motor vehicles other than those belonging to the defence services. Excludes tractors, plant and equipment, caravans and trailers. (b) Comprises utilities, panel vans, rigid and articulated trucks and other truck-type vehicles (i.e. motor vehicles designed for purposes other than freight carrying, e.g. campervans, tow trucks, ambulances and hearses) and buses.

Table 35. Turnover of retail establishments at current prices, Tasmania (a)

<i>Period</i>	<i>Original (\$m)</i>	<i>Trend estimates (b)</i>	
		<i>(\$m)</i>	<i>% change from corresponding month of previous year</i>
1992 — October	r 226.0	r 221.9	r 6.4
1993 — October	r 229.4	r 228.8	r 3.1
November	r 239.9	r 230.6	r 3.8
December	r 308.9	r 231.5	r 4.2
1994 — January	r 221.6	r 231.5	r 4.3
February	r 211.8	r 231.1	r 4.1
March	r 233.6	r 230.8	r 4.2
April	r 220.6	r 231.0	r 4.7
May	r 225.9	r 231.2	r 4.9
June	r 217.1	r 231.4	r 4.9
July	r 224.0	r 231.4	r 4.2
August	r 220.8	r 231.4	r 3.2
September	r 223.2	r 231.3	r 2.1
October	224.2	p 231.5	p 1.2

(a) Survey has been re-designed - see Information Paper (8511.0). (b) Trend estimates revised each month.

**REGISTRATIONS OF NEW MOTOR VEHICLES
TASMANIA, OCTOBER 1994
(excluding motorcycles)**

**RETAIL TURNOVER - TREND
Tasmania (a)**


Major Statistical Indicators

Table 36. Major statistical indicators — Australia and State comparisons

	<i>NSW</i>	<i>Vic.</i>	<i>Qld</i>	<i>SA</i>	<i>WA</i>	<i>Tas.</i>	<i>Aust. (a)</i>
Population							
Estimated resident population, March 1994 ('000)	6 041.3	4 473.6	3 178.1	1 468.6	1 695.7	472.2	17 803.3
Proportion of Australian population, March 1994 (%)	33.9	25.1	17.9	8.2	9.5	2.7	100.0
Population growth rate, 12 months to March 1994 (%)	0.8	0.2	2.6	0.5	1.4	0.2	1.0
Labour Force							
Employment growth, 12 months to November 1994 (trend series) (%)							
Males	3.6	2.6	4.3	1.0	2.6	2.8	3.1
Females	3.0	2.8	6.9	3.4	6.1	- 1.8	3.8
Persons	3.3	2.7	5.4	2.1	4.0	0.8	3.4
Unemployment rate (trend series), November 1994 (%)	8.8	10.1	9.1	10.4	7.8	11.0	9.2
Unemployment growth, 12 months to November 1994 (trend series) (%)	- 15.9	17.1	- 11.3	4.9	12.7	- 12.4	- 13.8
Participation rate (trend series), November 1994 (%)	61.9	62.7	64.3	62.0	66.1	59.6	63.1
Average weekly overtime worked per employee, August 1994 (hours)	1.2	1.4	1.3	1.2	1.4	1.0	1.3
Job vacancy rate, August 1994 (%)	1.3	0.7	1.3	0.9	1.0	0.9	1.1
Working days lost through industrial disputes, 12 months to August 1994 (days per '000 employees)	92	78	128	31	43	31	83
Wages and Prices							
Average weekly total earnings, full-time adult employees (original series) May 1994 (\$)							
Males	730.0	698.5	671.9	664.3	717.0	662.4	705.9
Females	582.4	569.0	529.3	567.1	539.1	537.2	566.7
Persons	676.4	651.9	623.3	632.9	651.5	619.3	656.1
Average weekly total earnings, full-time adult employees, growth rate, 12 months to May 1994 (%)	4.5	3.5	3.9	2.6	2.3	3.4	3.7
Consumer price index, all groups, annual growth to September quarter 1994 (%)	2.1	1.5	2.4	2.0	2.0	2.1	1.9
Building							
Percentage change in the number of new residential dwelling units approved in twelve months ended October 1994, over the same period previous year	10.5	7.6	9.4	6.7	15.2	- 3.5	8.3
Finance and Retail Trade							
Percentage change in private new capital expenditure, twelve months ended June 1994, over the same period previous year	- 3.3	17.4	1.9	10.0	9.0	- 29.3	3.9
Percentage change in trend estimates turnover of retail establishments, October 1994 (change from corresponding month of the previous year)	8.7	9.0	10.0	7.2	6.4	1.2	8.4
Transport							
Percentage change in number of new motor vehicles (excluding motorcycles) registered twelve months ended October 1994, over the same period previous year	13.4	11.3	8.4	4.0	8.2	6.7	8.9
Agriculture							
Percentage change in the number of livestock slaughtered twelve months ended October 1994 over the same period previous year							
Cattle and calves	- 2.0	8.8	5.0	9.6	5.9	- 4.6	1.3
Sheep and lambs	9.6	3.8	- 25.4	8.9	17.8	8.5	1.5
Tourism							
Room occupancy rates for hotels, motels etc. with facilities, June quarter 1994 (%)	53.5	48.1	60.2	47.4	54.7	51.2	54.1
Australian National and State Accounts							
Percentage change in GSP (GDP), Constant Price (b) Trend Series							
June qtr 1994 to Sept qtr 1994	1.1	1.5	1.9	0.9	2.1	0.2	1.4
Sept qtr 1993 to Sept qtr 1994	4.7	4.9	7.1	2.0	10.2	- 0.2	5.7

(a) Australian totals include the ACT and NT.

(b) This is the first quarter for which constant price estimates have been published.



For more information ...

The ABS publishes a wide range of statistics and other information on Australia's economic and social conditions. Details of what is available in various publications and other products can be found in the *ABS Catalogue of Publications and Products* available at all ABS Offices (see below for contact details).

Information Consultancy Service

Information tailored to special needs of clients can be obtained from the Information Consultancy Service available at ABS Offices (see Information Inquiries below for contact details).

National Dial-a-Statistic Line

0055 86 400

(Steadycam P/L - premium rate 25c/21.4 secs.)

This number gives 24-hour access, 365 days a year for a range of statistics.

Electronic Data Services

A large range of data is available via on-line services, diskette, magnetic tape, tape cartridge and CD ROM. For more details about our electronic data services, contact any ABS Office (see below).

Bookshops and Subscriptions

There are over 400 titles of various publications available from ABS bookshops in all ABS Offices (see below Bookshop Sales for contact details). The ABS also provides a subscription service through which nominated publications are provided by mail on a regular basis at no additional cost (telephone Publications Subscription Service toll free on 008 02 0608 Australia wide).

Sales and Inquiries

Regional Offices	Information Inquiries	Bookshop Sales
SYDNEY (02)	268 4611	268 4620
MELBOURNE (03)	615 7000	615 7829
BRISBANE (07)	222 6351	222 6350
PERTH (09)	360 5140	360 5307
ADELAIDE (08)	237 7100	237 7582
HOBART (002)	20 5800	20 5800
CANBERRA (06)	207 0326	207 0326
DARWIN (089)	43 2111	43 2111
National Office		
ACT (06)	252 6007	008 020 608

ABS Email Addresses

Keylink	STAT.INFO/ABS
X.400	(C:AU,A:TELMEMO,O:ABS,SN:INFO,FN:STAT)
Internet	STAT.INFO@ABS. TELEMEMO.AU



Information Services, ABS, PO Box 10, Belconnen ACT 2616



© Commonwealth of Australia 1995

Recommended retail price: \$12.00



2130360001954

ISSN 1034-1803